

## HE-TRACK-LED MACHINE LIGHTING

3

LIGHTING SYSTEMS

4

WORKPLACE LIGHTING

8

SPOT FITTING LIGHTING



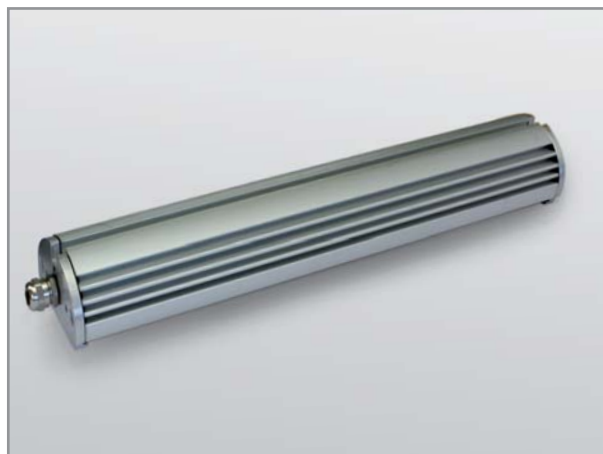
HE-TRACK-LED, diffuse lighting for glare-free working

12

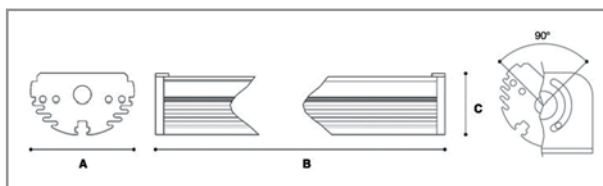
MACHINE LIGHTING

19

INTEGRATED LIGHTING



HE-TRACK-LED, top view



The HE-TRACK-LED machine lamps are designed for small and mid sized machine tools.

The housing is of robust, silver anodised aluminium. The 5 mm thick, hardened safety pane presents a matt surface for diffuse, dazzle free lighting.

The lamps can be fitted with optional mounting plates for both horizontal and vertical installations. The lamps are impact resistant, impervious to vibrations, and can also operate in environments with coolants and lubricants.

In addition, the HE-TRACK-LED machine lamps are extremely low maintenance. This LED technology exhibits a long service life of 50,000 operating hours, so the lamp is virtually replacement free, eliminating the cost for new parts and repairs.

- Flexible machine lamp
- Adjustable lighting angle
- Direct 24 V connector without additional components
- Resistant to many coolants and lubricants

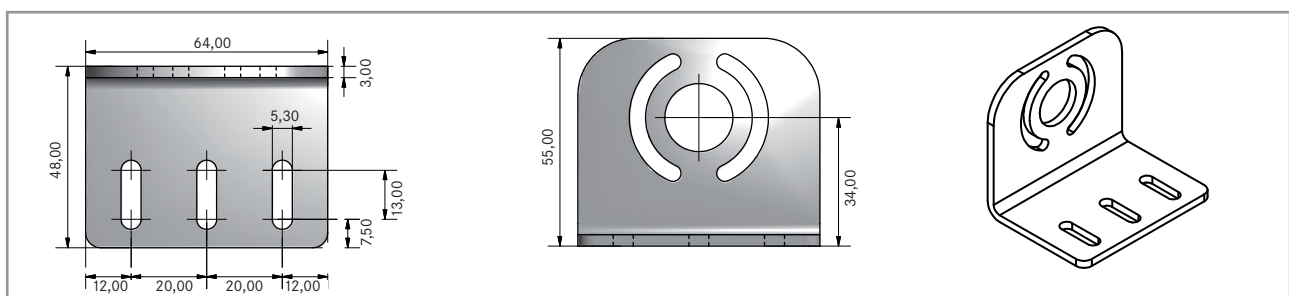


Version	A	B	C
HE-TRACKLED 24	63	340	37
HE-TRACKLED 48	63	640	37
HE-TRACKLED 72	63	940	37
HE-TRACKLED 96	63	1240	37

Dimensions in mm

Version	Power supply	LED no	Operating voltage	Light temperature	Lens	Mounting
HE-TRACKLED 24	24 VDC	36	13 W	5000K	120°	external
HE-TRACKLED 48	24 VDC	90	34 W	5000K	120°	external
HE-TRACKLED 72	24 VDC	126	47 W	5000K	120°	external
HE-TRACKLED 96	24 VDC	180	68 W	5000K	120°	external

Delivered with cable lengths of 1.5m, cable ends of bare wires.

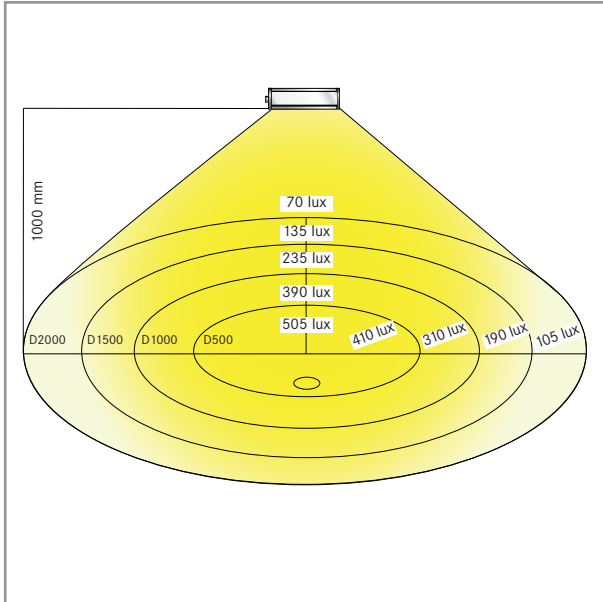


Fastener FX04

Order and request forms available at: [www.hema-group.com](http://www.hema-group.com)

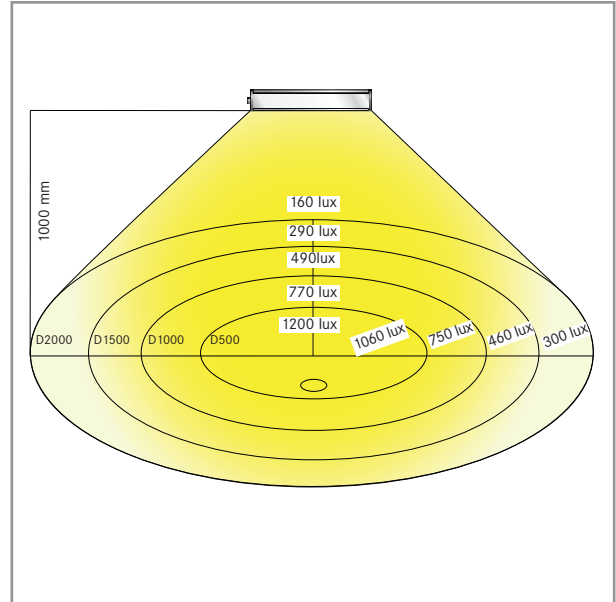
# ILLUMINATION DISTRIBUTION CHARTS

HE-TRACK-LED24



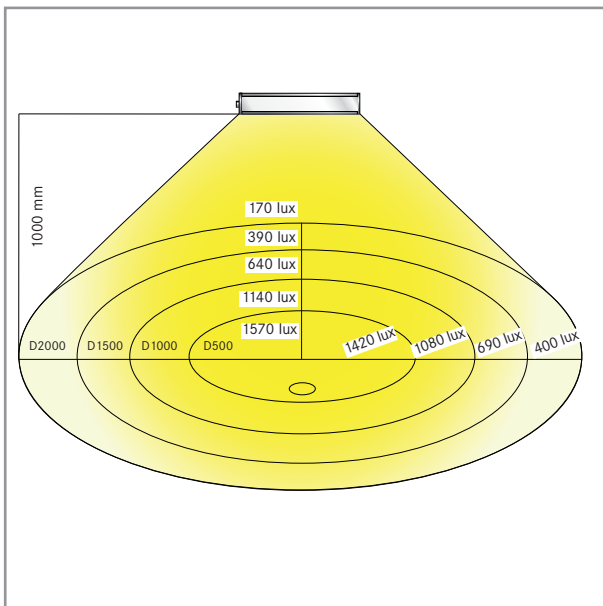
Technical details	Page 12
Lens	120°
Current	600 mA
Lighting systems	HE-TRACK-LED24

HE-TRACK-LED48



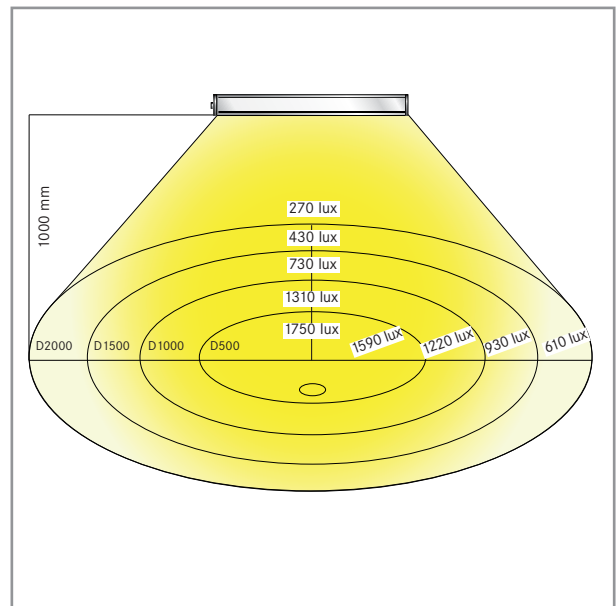
Technical details	Page 12
Lens	120°
Current	1500 mA
Lighting systems	HE-TRACK-LED48

HE-TRACK-LED72



Technical details	Page 12
Lens	120°
Current	2100 mA
Lighting systems	HE-TRACK-LED72

HE-TRACK-LED96



Technical details	Page 12
Lens	120°
Current	3000 mA
Lighting systems	HE-TRACK-LED96

LIGHTING SYSTEMS	3
WORKPLACE LIGHTING	4
SPOT FITTING LIGHTING	8
MACHINE LIGHTING	13
INTEGRATED LIGHTING	19