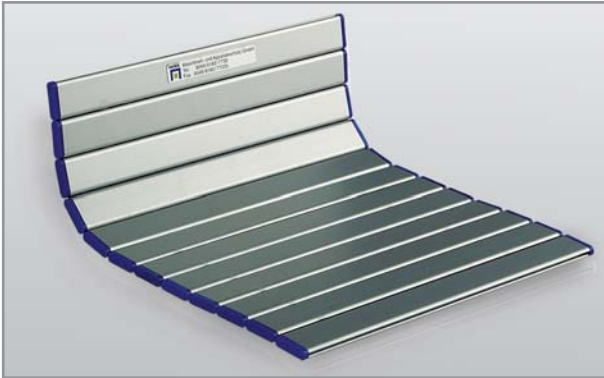


LINK APRONS

Link aprons are a low-priced type of cover, providing excellent service in front line protection against chips and coolant. In many cases, link aprons serve as a protective hanging curtain or run over a guide roller for especially smooth running. They offer good flexibility, are mounted easily and require little space.



FLEXSTAR Link apron aluminium

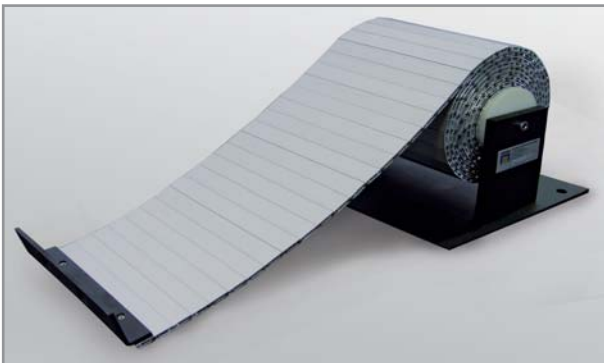


FLEXSTAR ALC Aluminium-Profil

Combination with ROLLER system

For more demanding solutions, the link aprons are combined with a system of roller blinds.

The link apron is wound on top of the ROLLER standard system. The ROLLER diameter is considerably increased in its wound-up state. The drive unit is exactly matched to the additional weight and forces. We offer complete guide systems based on travel rails, steel cables or aluminium profiles.



FLEXSTAR Link apron with holder and fixing bracket

HEMA link aprons are subdivided into the basic types:

- FLEXPRO aprons
- FLEXSTAR aprons
- FLEXWALK
- FLEXSTAR Windows

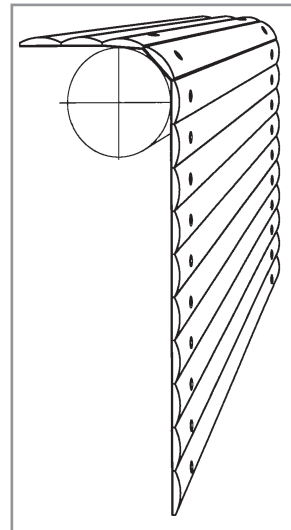
Link aprons

The metal sections are flat or semi-circular aluminium, brass or steel sections. They are bonded and riveted on a very tear resistant synthetic carrier material

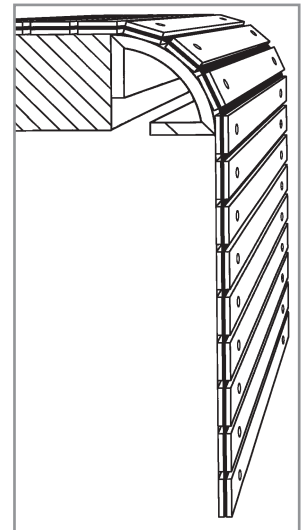
The sections have a standard width of 15 or 16 mm, the height of the rods is between 2.0 mm (flat) and 3.0mm (semi-circular). The link aprons are manufactured in a width up to 3000 mm.



FLEXPRO link apron, different combinations



FLEXPRO (Type 4/5)



FLEXPRO (Type 1/2/3)

FLEXSTAR aprons

These aprons are made up of anodised hollow aluminium sections joined with a polyurethane strip. On the visual side the glider elements are rounded at the edges (FLEXSTAR-S) or straight (FLEXSTAR-C/CR).

SERVICE & QUALITY 02

STANDARD BELLOWS 08

SAUWRAI BELLOWS 18

SPECIAL BELLOWS 26

BACKWALL SYSTEMS 36

GLADIATOR STEEL COVERS 38

ROLLER SYSTEMS 55

DURASPRING SPIRAL SPRINGS 58

LINK APRONS

02

SERVICE & QUALITY

08

STANDARD BELLOWS

18

SAUMIRAJ BELLOWS

26

SPECIAL BELLOWS

34

BACKWALL SYSTEMS

38

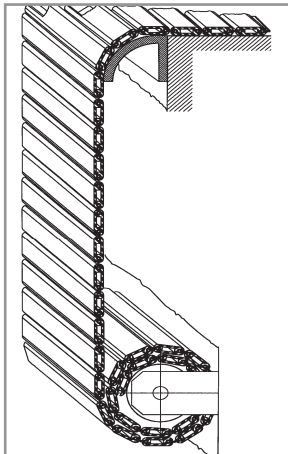
GLADIATOR STEEL COVERS

56

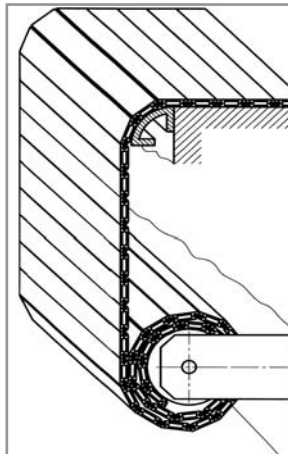
ROLLER SYSTEMS

58

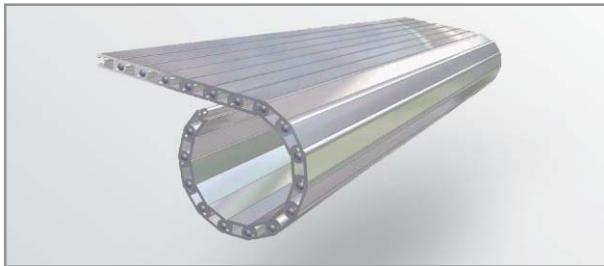
DURASPRING SPIRAL SPRINGS



FLEXSTAR-S



FLEXSTAR-C/CR



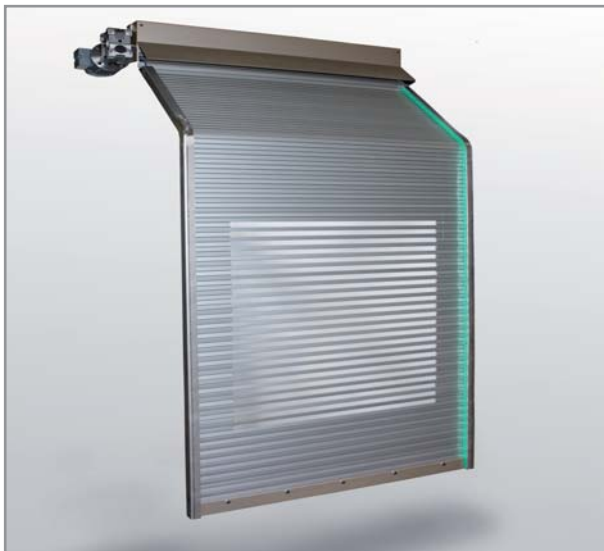
FLEXSTAR ALC14/ALC25

Both extrusion have bending restraints

- FLEXSTAR-S can move freely in both directions
- FLEXSTAR-C/CR permits only one-way bending, adopting a stable flat position in the other direction

Example for a customized solution

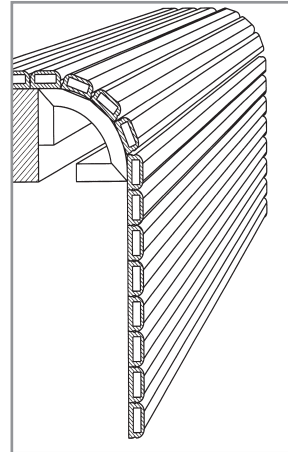
For an application in the packaging industry a combination of electric drive, FLEXSTAR apron covers, and steel band was designed as a kind of Faraday cage. A mechanical drive can be integrated as an option.



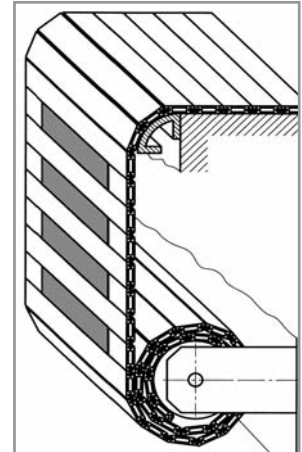
Example of link apron with electric drive

FLEXWALK

The FLEXWALK type is available in two section sizes. It is a combination of extremely stable hollow aluminium sections and a carrier fabric of synthetic or stainless steel band. This is used when the customer requires an accessible solution. The aprons with a steel band as carrier material are joined with a high-performance bond of the required flexibility. These steel band aprons can therefore be used permanently on roller blind systems as well.



FLEXWALK



FLEXSTAR-Windows

FLEXSTAR Windows

FLEXSTAR aprons combined with vision inserts are very popular on the assembly sectors. We offer different types with rigid polycarbonate inserts or flexible see-through foil



FLEXSTAR Windows with see-through foil



FLEXSTAR Windows with polycarbonate inserts

Material

These link aprons consist of hollow section solutions manufactured to the greatest precision. The gap dimensions between the sections provide the best possible protection for the polyurethane strip. End caps improve the gliding properties. The standard colour of these caps is blue, but other colours are available on request.

LINK APRONS

Mounting

The link aprons can be fastened with

- hollow aluminium section angles
- metal ledges
- metal angles at the end of the apron

Customers are free to choose the shape or fixing hole pattern.



FLEXSTAR with synthetic band connection, end caps blue

link apron type exterior / interior section fixing	connecting material	section with in mm	section height in mm	smallest unwind radius in mm	profile type
FLEXPRO 1 steel/steel bonded and riveted	synthetic carrier band	15/15	2.0/2.0	40	
FLEXPRO 2 steel/brass bonded and riveted	synthetic carrier band	15/15	2.0/2.0	40	
FLEXPRO 3 steel/aluminium bonded and riveted	synthetic carrier band	15/15	2.0/2.0	40	
FLEXPRO 4 half round aluminium bonded and riveted	synthetic carrier band	16	3.0	21	
FLEXPRO 5 semicircular al./aluminium bonded and riveted	synthetic carrier band	16/15	3.0/2.0	35	
FLEXWALK 1 Hollow alu. section, anodised bonded and riveted	synthetic carrier band or stainless steel	22 22	10.0 10.0	40 100	
FLEXWALK 2 Hollow alu. section, anodised bonded and riveted	synthetic carrier band or stainless steel	18 18	8.0 8.0	40 100	
FLEXSTAR-S Alu. hollow profile, anodised* indentation	synthetic band connection end caps available	20	5.5	35	
FLEXSTAR-C Hollow alu section, anodised* indentation	synthetic band connection end caps available	20	5.5	35	
FLEXSTAR-CR Hollow alu section, anodised* indentation	synthetic band connection	25	8.0	70	
FLEXSTAR ALC14 Hollow alu section, anodised indentation	rivet aluminium	25	14.0	40	
FLEXSTAR ALC25 Hollow alu section, anodised indentation	rivet aluminium	50	25.0	90	

*Inserts of see-through foil or polycarbonate (Windows) possible

All dimensions in mm if not marked otherwise. Errors and omissions excepted.

SERVICE &
QUALITY 02

STANDARD
BELLOWS 08

SAUWRAI
BELLOWS 18

SPECIAL
BELLOWS 26

BACKWALL
SYSTEMS 36

GLADIATOR
STEEL COVERS 38

ROLLER
SYSTEMS 57

DURASPRING
SPIRAL SPRINGS 58